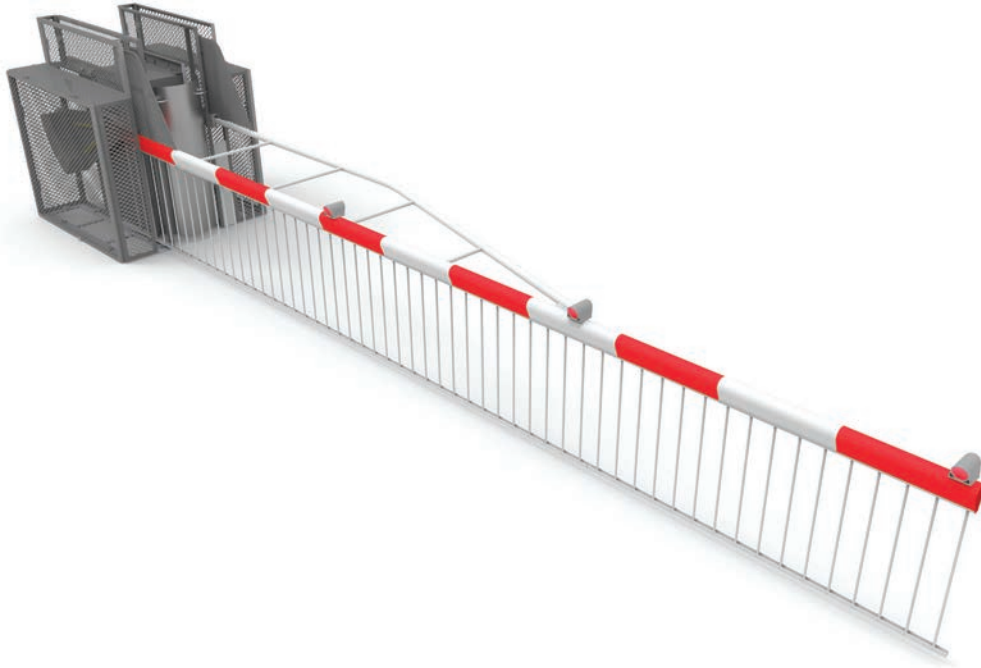




## MK3 BR843 Barrier Machine

---



To celebrate the 30th year of production, the SPX Rail Systems BR843 level crossing barrier machine has been updated to meet the challenging needs of today's rail industry. Now available for delivery, the MK 3 version is fully approved by Network Rail and issued with CE Declaration of Incorporation.

- CE Declaration of Incorporation
- Boom length of 3.6m up to, but not limited to, 9.1m
- Zero Maintenance
- IP68 Contactless door switch
- IP68 Contactless Boom Switch
- IP68 LED light connectors
- Easy fit skirt drops
- Lubrication free main bearing and bushes
- EN Standard compliant protective guarding
- Simplified reflective stickers
- Common user interfaces



**PT Hydraulics Australia Pty Ltd**

19 Ricketts Rd,

Mt Waverley,

VIC 3149

P: +61 3 9562 8800

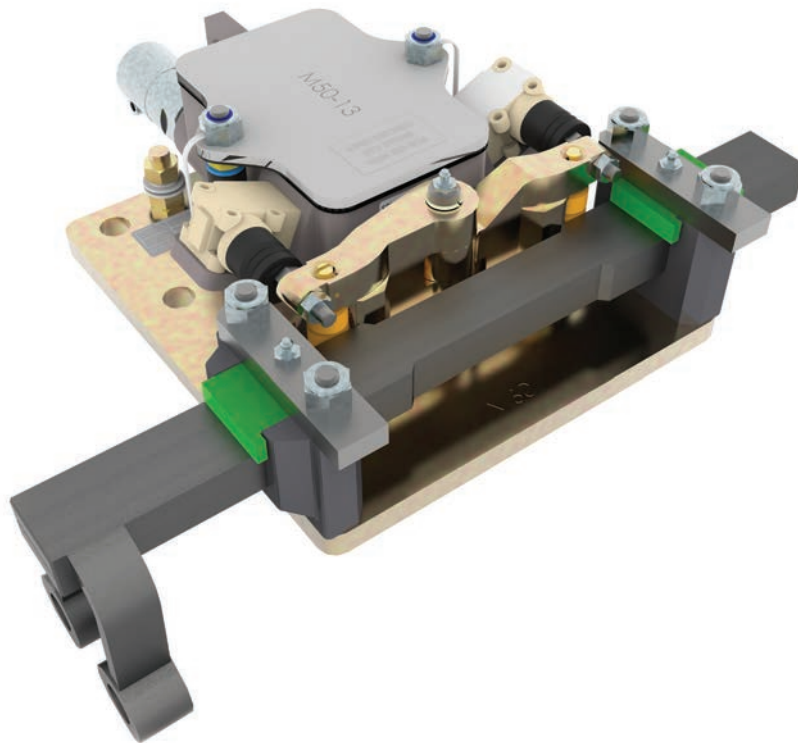
F: +61 3 9562 8080

E: [sales@pthydraulics.com.au](mailto:sales@pthydraulics.com.au)



## BR998 Rapid Commissioning Detector

---



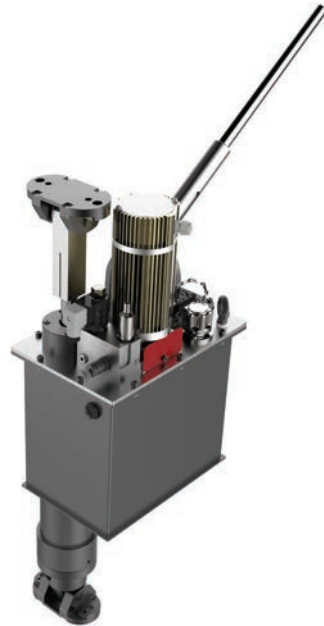
Based upon the well known BR998 unit, this upgraded item provides rapid connection using factory verified connection and wiring. Provided with tamperproof shields and lockable connection. Interface to the track element remains unchanged. Proven in use this unit is designed to cut track access time to a minimum.

- Rapid Commissioning options
- Tamper-proof shield
- Wiring options to suit special applications available
- IP68 electronics
- Can be supplied with and without slides
- Ground connection available



## MK3 BR985 Power Pack

---



A true maintenance-free Network Rail approved (and issued with a CE Declaration of Incorporation certificate), this power pack is the only OEM approved upgrade power pack available on the market for the BR843 barrier machine. Designed specifically in conjunction with Network Rail, this new pack offers substantial cost-saving features with extended life and high MTBSAF.

Fitted as standard on all MK3 barrier machines, this power pack offers true maintenance-free reliability and eliminates the need for annual lubrication-based maintenance. Built in diagnostic features now come as standard. Why not upgrade your MK2 barrier machine power pack at service? The new MK3 power pack fits directly into all MK2 barrier machines with no modifications and offers immediate cost saving and performance benefits.

- OEM approved power pack for MK2 / MK3 BR843 Barrier Machine
- CE Declaration of Incorporation
- New maintenance-free brushless motor
- New high volume long life filter
- New maintenance free spherical bearing
- New easy-adjust damping, no special tools
- New feature to adjust decent speed
- Simplified maintenance
- Increase performance
- Rated life of 1 million operation cycles



**PT Hydraulics Australia Pty Ltd**  
19 Ricketts Rd,  
Mt Waverley,  
VIC 3149

P: +61 3 9562 8800

F: +61 3 9562 8080

E: [sales@pthydraulics.com.au](mailto:sales@pthydraulics.com.au)



## MK2 / MK3 BR843 Protective Guard

---



Developed in conjunction with Network Rail and the ORR, the SPX MK2 / MK3 BR843 Protective Guard meets the requirements for an easy ship, fit and forget protective guard system.

Fully Network Rail approved, tested for Obstacle Detection compatibility and issued with a CE Declaration of Incorporation for installation on infrastructure, this new development allows for all MK2 and MK3 barriers to be upgraded or supplied as new with an OEM approved design specifically tailored to the needs of level crossing safety and reliability.

- CE Declaration of Incorporation
- MK2 BR843 upgrade
- MK3 BR843 standard fitment
- Conformance to EU standards
- Flat pack delivery
- Maintenance Free Long Life Design
- Simple installation with no modification to Barrier Machine
- All Components under 25kg
- Obstacle detection compatible