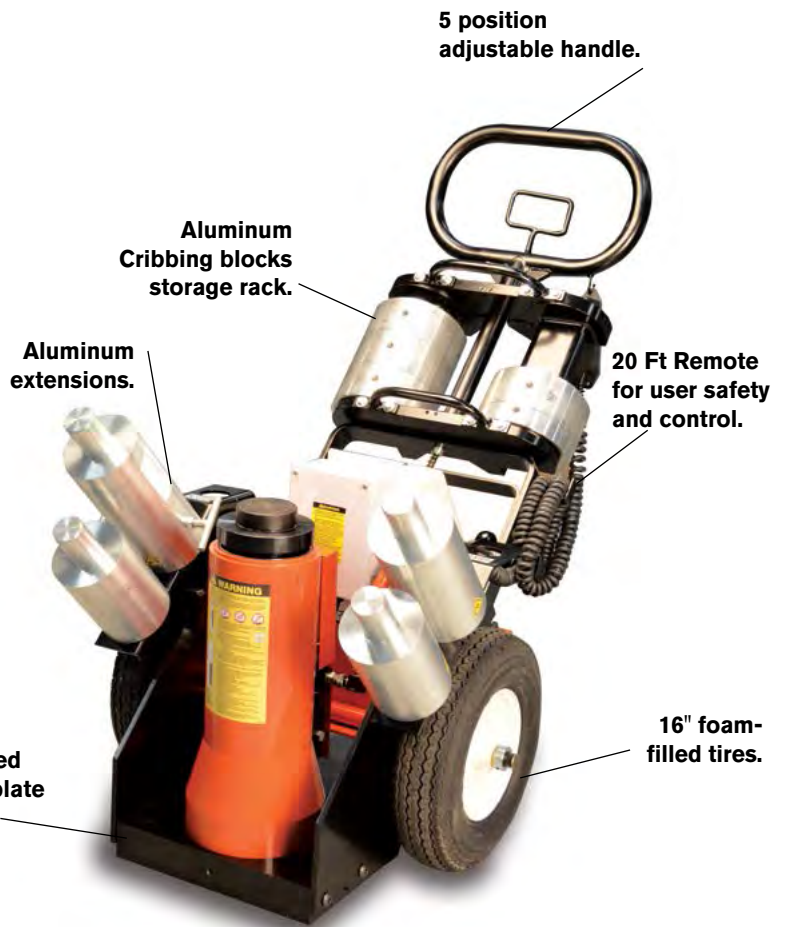


PORTABLE 100 TON JACKS

Railroad Edition

- The bottom of the cylinder is a bolted joint, using the base plate as part of the cylinder. This will allow for service of even the oldest or most abused jacks.
- Cribbing storage rack location is such that it allows easy access during cribbing placement and removal.
- Remote operation (20 ft. remote) for user safety and control.
- Easy to maneuver, large tires and small footprint make it easy to get into tight spaces.
- Adjustable handle, easy to position the jack under loads.

Cylinder bolted (8x) to base plate (2.5" Thick)



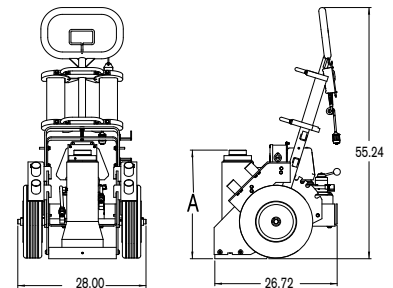
PRODUCT SPECIFICATIONS

Type of Pump	Low Pressure Pump		High Pressure Pump		Current Draw at Max Internal Relief Settings (AMPS)	Unload Pressure (PSI)	Internal Relief Pressure (PSI)	Tank (GAL)	Valving
	Flow (cu. in./min.)	Pressure (PSI)	Flow (cu. in./min.)	Pressure (PSI)					
Electric	440	440	58	10,000	28	900-1225	10,000	2	4W3P Tandem Center Manual
Air	330		30	10,000	NA	540-780			

* Electric pump is powered by a 110/115 VAC, 50/60 Hz, single phase motor

ORDERING INFORMATION - JACKS

Order Number	Description	Stroke (in)	Retracted Height (in)
RJ100T24E	Jack, 100 Ton RR 24" Ret, Elect	16	24
RJ100T37E	Jack, 100 Ton RR 37" Ret, Elect	27	37
RJ100T24A	Jack, 100 Ton RR 24" Ret Air	16	24
RJ100T37A	Jack, 100 Ton RR 37" Ret Air	27	37
RJ100T24A-C	Jack, 100 Ton RR 24" Ret Air w/Crib Block	16	24
RJ100T24E-C	Jack, 100 Ton RR 24" Ret Elect w/Crib Block	16	24
RJ100T37A-C	Jack, 100 Ton RR 37" Ret Air w/Crib Block	27	37
RJ100T37E-C	Jack, 100 Ton RR 37" Ret Elect w/Crib Block	27	37
RJ100T24A-E	Jack, 100 Ton RR 24" Ret Air w/Ext	16	24
RJ100T24E-E	Jack, 100 Ton RR 24" Ret Elect w/Ext	16	24
RJ100T37A-E	Jack, 100 Ton RR 37" Ret Air w/Ext	27	37
RJ100T37E-E	Jack, 100 Ton RR 37" Ret Elect w/Ext	27	37



RAIL JACKS ACCESSORIES

ORDERING INFORMATION - EXTENSIONS

Order Number	Description
RJ-EXT18	Assembly, Extension 18 in. 100 Ton RR Jack
RJ-EXT14	Assembly, Extension 14 in. 100 Ton RR Jack
RJ-EXT11	Assembly, Extension 11 in. 100 Ton RR Jack
RJ-EXT9	Assembly, Extension 9 in. 100 Ton RR Jack
RJ-EXT7	Assembly, Extension 7 in. 100 Ton RR Jack
RJ-EXT5	Assembly, Extension 5 in. 100 Ton RR Jack
RJ-EXT-S	Set, Extensions 100 Ton RR Jack 7, 9, 14
RJ-EXT-S1	Set, Extensions 100 Ton RR Jack 5, 11, 18



ORDERING INFORMATION - CRIBBING BLOCKS

Order Number	Description
RJ-CB10	Assembly, Crib Block 10 in. 100 Ton RR Jack
RJ-CB5	Assembly, Crib Block 5 in. 100 Ton RR Jack
RJ-CB3	Assembly, Crib Block 3 in. 100 Ton RR Jack
RJ-CB1	Assembly, Crib Block 1 in. 100 Ton RR Jack
RJ-CB-S	Set, Crib Blocks 100 Ton RR Jack 1, 3, 5, 10



ORDERING INFORMATION - SPACERS

Order Number	Description
RJ-SP-1	Spacer, 1 in.
RJ-SP-2	Spacer, 2 in.
RJ-SP-3	Spacer, 3 in.
RJ-SP-S	Spacer Set 100 ton RR Jack 1, 2, 3

ORDERING INFORMATION - SWIVEL CAPS

Order Number	Description
RJ-SC-1	Assembly, Swivel Cap 100 Ton RR Jack
RJ-SC-2	Assembly, Swivel Cap 100 Ton RR Jack Long



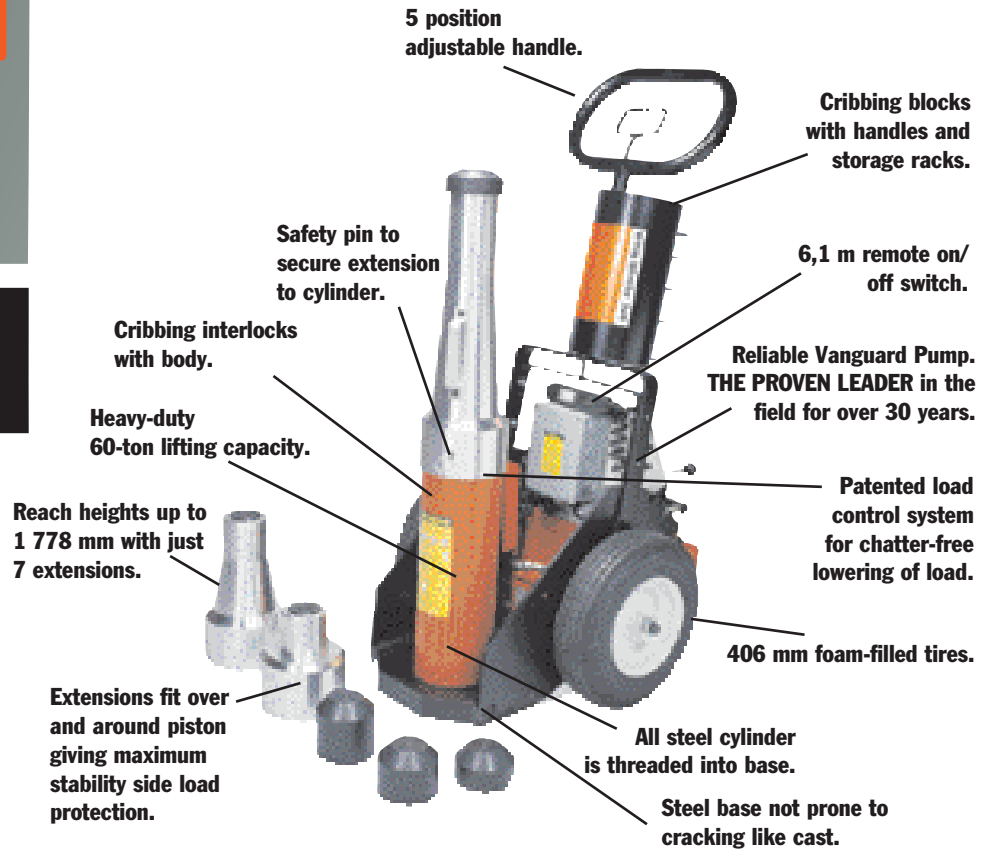
Note: Contact factory for 60 Ton 14" stroke, 24" retracted height
 Old Models: PLE6014K, PLA6014K, PLE6014K-220

Portable HIGH TONNAGE JACKS

60-100 Ton Railroad Edition

Portable & compact, ideal for locomotive and railcar mining.

JACKS



- Patented load lowering valve. Lowers load smoothly and safely. Eliminates dangerous chatter and bounce.
- Full range of rod extensions. Jack comes fully equipped with extensions to match lifting pad heights on most rolling stock. Max. lifting height to 1 778 mm .
- Low collapsed height, long stroke. 610 mm collapsed height for low-clearance lift pads. 360 mm stroke for maximum lift.
- Adjustable, ergonomic handle. Handle tilts to start the job and is easily locked/unlocked without moving from operating position.
- Cribbing block set with handles and convenient storage rack. Provides solid mechanical load holding.
- High-profile, low rolling resistance, foam-filled tires. Jack can be moved and positioned with minimal effort. No chance of downtime due to punctured tires.
- Electric and air motor options. Quiet, powerful air and electric motor powered units available.
- Contact factory for:-
 - lower collapsed height
 - custom cribbing block sizes
 - custom piston rod extensions

POWER UNIT SPECIFICATIONS

Order No.	Motor	Power Req.	Motor Control	Valve Function	Power Cord	dBa at 700 bar
PLE6014-220	0,84 kW, 220 VAC***, 50 Hz Single Phase	12 amps	6,1 m Remote Control	Lift Hold Lower Manual	Pigtail	80/95
PLA6014	Rotary Air Powered	1,4 cu.m at 6 bar	6,1 m Remote Air Control	Lift Hold Lower Manual	NA	82

*** For 110/115V-50/60 Hz order PLE6014



Electric Model
(PLE6014K)



Air Model
(PLA6014K)

**CRIBBING BLOCKS
(CBS60, INCLUDED)**

Qty.	Height (mm)	Order Number
1	38,1	351954
4	76,2	351953

**EXTENSIONS
(PL60 EXT, INCLUDED)**

Extension Length (mm)	Order Number	Extension Weight (kg)
25,4	351931	2,2
50,8	351927	4,0
76,2	351928	6,4
101,6	351929	8,7
127	66053	9,5
254	66054	13,8
508	66055	22,1

LIFTING RANGE
Lifting range (in 25,4 mm increments): 610 mm- 1.778 mm.
Only 3 extensions are needed to provide this range.
Do NOT exceed 1.778 mm lifting range on 60-ton unit or 1.489 mm on 100-ton unit.

ORDER INFORMATION						
Capacity (Tons)	Stroke (mm)	Order Number	Retracted Height (mm)	Extended Ht. w/Extensions (mm)	Product Wt. Less Cribbing & Ext. (kg)	
60	356	*PLA6014K	610	1.778	237	
60	356	*PLE6014K-220	610	1.778	237	
100	356	Consult Factory	610	1.499	237	

*Includes cribbing block set stored on jack handle rack, and 7 extensions (25,4; 50,8; 76,2; 101,6; 127; 254 and 308 mm)

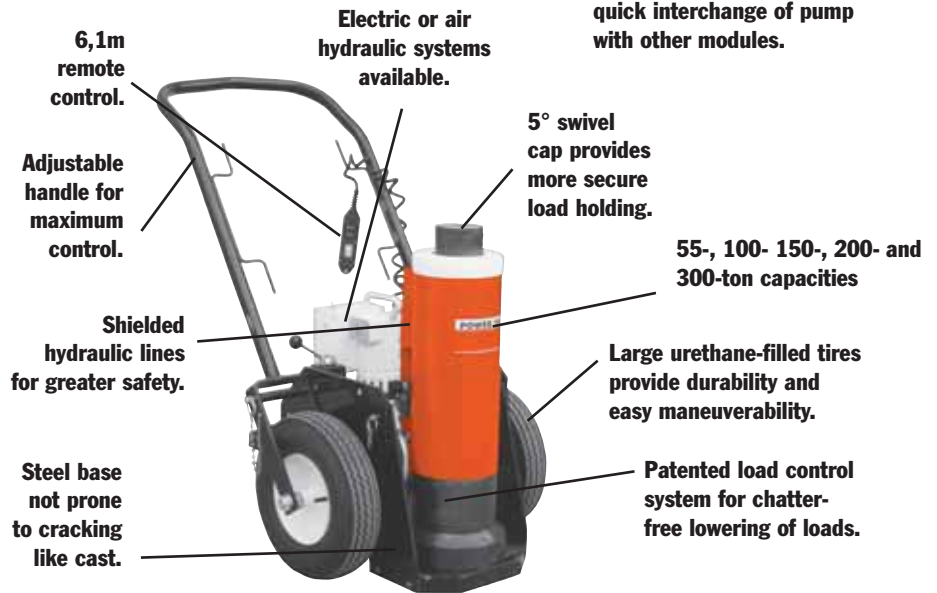
PLE6014 = Jack, Electric (115 V), includes: Cart, Pump & Cylinder
PLE6014-220 = Jack, Electric (220 V.) includes: Cart, Pump & Cylinder
PLA6014 = Jack, Air, includes: Cart, Pump & Cylinder
CBS60 = Cribbing Block Set (5 cribbing blocks)
PL60EXT = Extension Set (Consists of 7 extensions)

Portable HIGH TONNAGE

55, 100, 150, 200 &
300 Ton

Portable and compact, ideal for locomotive/railcar, mining and heavy equipment maintenance.

JACKS

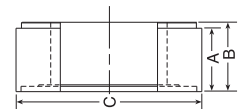


- Modular design - pump and cart separate from cylinder and base.
- Five tonnage capacity options - 55-ton, 100-ton, 150-ton, 200-ton and 300-ton.
- Three collapsed height options – 660, 838 and 1,143 mm.
- Two standard power options - air (PA55) and electric (PE55).
- Two control options - remote motor control and remote valve/motor control.
- Accessory options – 168 mm extension, load-holding rings.
- Select the collapsed height to fit your most frequent application - add jacking modules to suit your needs.
- Remote operation for maximum operator safety and control - choose "motor only" or "motor and valve" control in the hand.
- Easy to maneuver - large tires and small "footprint" make it easy to scoot into the tightest quarters, then locate the exact lifting position.
- Adjustable, heavy-duty handle - makes this jack easy to move, position under vehicles. Can also be used to transport jack on site with a forklift.
- Load-holding rings (optional) - provide full rated mechanical load-holding capability.
- Cylinder extension (optional) - adds more versatility by extending your jack's reach.
- Low-temperature oil (optional) - provides smooth, reliable operation in the coldest climate conditions.
- Modular design - allows you to change lifting modules to suit your tonnage or height requirements. Use the pump module as a portable power station for your other double-acting cylinders (700 bar).
- Exclusive load-control system - provides positive, chatter-free control when lowering the load.
- Shielded and sheltered hydraulic lines - for safer, longer, trouble-free service.

ORDER INFORMATION

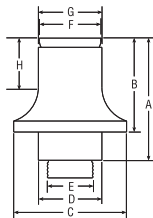
CRIBBING BLOCK SETS - INCLUDES ONE JACK MODULE EXTENSION

Order No.	55 Ton CBS55		100 Ton CBS100		150 Ton CBS150		200 Ton CBS200	
	No. in Set	1	4	1	4	1	4	1
A	38,1	76,2	38,1	76,2	38,1	76,2	38,1	76,2
B	44,5	82,5	44,5	82,5	44,5	82,5	44,5	82,5
C	139,7	139,7	187,3	187,3	222,2	222,2	254	254
Jack Module Ext.	173		177,8		168,3		168,3	
Total Stack Ht.	515,9		520,7		511,2		511,2	
Product Wt. (.kg)	16,3		30,9		38,6		47,6	



- Convert jack module into stable mechanical cribbing device.
- Increase retracted height up to 521 mm inches.

CBS300 (300 Ton): Consult Factory



ORDER INFORMATION

JACK MODULE EXTENSIONS

(Tons)	No.	A (mm)	B (mm)	C (mm)	D (mm)	E (in.)	F (mm)	G (mm)	H (mm)	Prod. Wt. (kg)
55	58945	223,8	173	127	66,8	1 ¹¹ / ₁₆ -8UN	63,5	66,8	92,2	9,5
100	58943	228,6	177,8	174,7	98,6	2 ³ / ₄ -12UN	95,3	98,6	95,3	18,2
150	58944	219,2	168,4	203,2	114,3	3 ¹ / ₄ -8UNC	111,3	114,3	88,9	22,7

- Increases jack's reach.
- Swivel cap (5° max.) provides more secure load holding.



Pump & cart modules (PM)

Pump and cart modules contain hydraulic pump, cart, remote control and all hoses and fittings required to connect to a jack module. Jack modules easily separate from the pump and cart module. Extra jack modules may be purchased for a wide variety of lifting applications.



Air pump and cart module. (PMA)



Electric pump and cart module. (PME)

Remote Control		
Pump	Motor Only	Motor & Valve
Air	PMA55	PMA55S
Electric (110V)	PME55[†]	PME55S[†]
Electric (220V)	PME55-50-220^{††}	PME55S-50-220^{††}
Air	PMA355	PMA355S
Electric (220V)	PME355-50-220^{††}	PME355S-50-220^{††}

[†]110V / 115V 60Hz Single phase motor.

^{††}220V / 50Hz / 60Hz Single phase motor.



660 mm (26") Jack Module

838 mm (33") Jack Module

1,143 mm (45") Jack Module

Jack modules (JM)

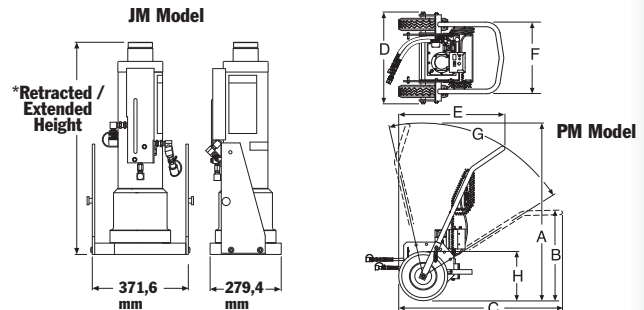
Additional Jack Modules may be purchased for varying applications.

Tonnage	Cylinder Stroke (mm)	Collapsed Height		
		26" 660mm	33" 838mm	45" 1,143mm
55	333	JM25	JM35	JM45
100	333	JM210	JM310	JM410
150	460	JM215**	JM315	JM415
200	460	JM220*	JM320	JM420
300***	333	JM300*	JM330	JM430

* Collapsed height: 711 mm & Cylinder Stroke: 333 mm

** Cylinder Stroke 333 mm

*** Must use PMx355x versions of pump/cart modules above.



DIMENSIONS (MM)

Model Series	A	B	C	D	E	F	G	H
PMA & PME	1.464	752	1.353	762	872	594	*70°	406 mm Tire Dia.

* Total range with varying degree increments.

ORDER INFORMATION – Pump and Cart Modules with Assembled Jack Module

Capacity (tons)	Ret. Height (mm)	Ext. Height (mm)	Stroke (mm)	Pump Type	Power Required	Valve Type	Remote Control	Order No.
55	660,4	994	333	Electric	25 amps	Manual	M	JEM5526[†]
100	838,2	1.172	333	Air	1,4 cu m /min at 6 bar	Manual	M	JAM10033
100	838,2	1.172	333	Air	1,4 cu m /min at 6 bar	Air Pilot	M & V	JAR10033
150	660,4	994	333	Electric	25 amps	Manual	M	JEM15026[†]
150	838,2	1.172	333	Air	1,4 cu m /min at 6 bar	Manual	M	JAM15033
200	711	1.044	333	Electric	25 amps	Remote	M & V	JER20026[†]
300	838,2	1.172	333	Air	1,4 cu m /min at 6 bar	Air Pilot	M & V	JAR30033

Different Modules Configuration available upon request.

[†]110V / 115V 60Hz Single phase motor. (220V / 50Hz / 60Hz Single phase motor upon request, please specify when ordering)